



Exclusive brand-new apartment in second sea line at Palma Beach

Ref: 2115-1B

Constructed area: 70,8 m²

Bedroom: 1

Parking: 1

Terrace: 10,8 m²

Bathroom: 1

Storage: 1

Fittings: large sliding elements with double glazing, built-in wardrobes, modern ceramic tiles, (hot-cold) air conditioning, underfloor heating, lift, community pool, parking space, storeroom, new construction

Price: 495.000€

Free of commission for the buyer.



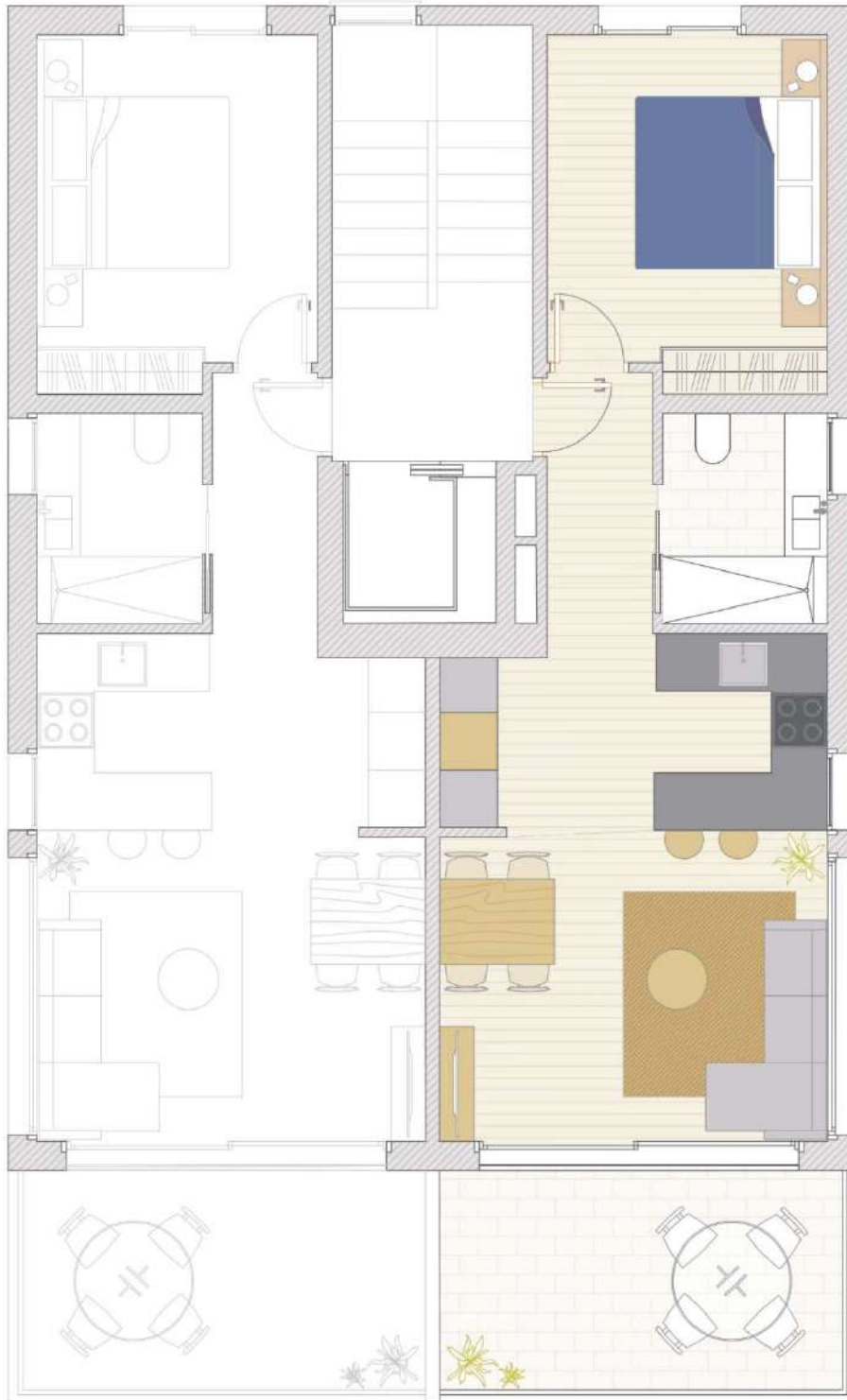
Description: Only a few steps away from the sandy beach a modern building with only four exclusive apartments and a nice community pool is being built in a top location. Each of the two apartments on the 1st floor has a good-sized, partly covered terrace of approx. 11 m² with sea views. The apartments have a living area of approx. 60 m² each and are distributed in a bedroom, a bathroom and a spacious living-dining area with a modern, open kitchen. 1 parking space and a storeroom complete the offer.

Palma Beach offers on this quiet beach area pure holiday feeling. The beach, many leisure activities, diverse shopping facilities and numerous restaurants are right on the doorstep. The long beach invites for a walk or a bicycle ride. Nearby there is the port of El Arenal, two exclusive beach clubs and two golf courses. To reach Palma you need less than 15 minutes and to the airport you need approx. 5 minutes.





PISO 1A



Planos

- Planta baja

